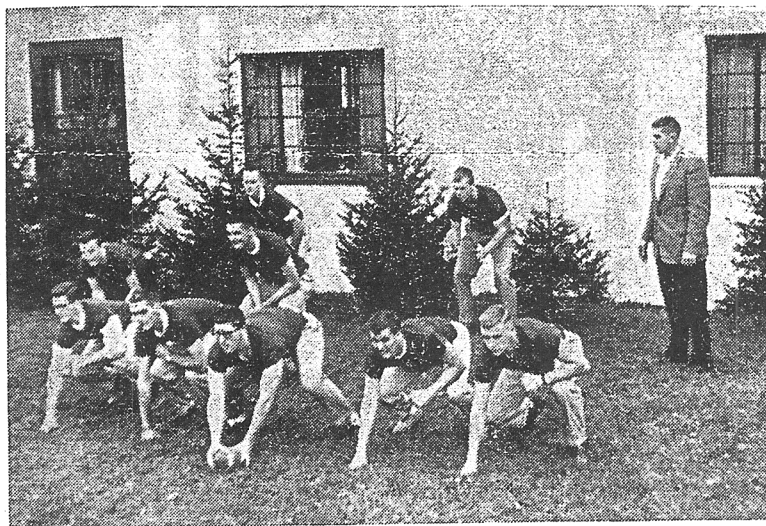


# KAPPA SIGMA

Vol. V

January, 1959

No. 1



## Growl—Tigers

One of the strongest Lambda Chi intramural football teams in four years concluded the season with a record of three wins, two losses and one tie, in a very closely competitive league. Our opening game ended in a disappointing 6-0 loss to Delta Sig, but our second game with Kappa Psi was more rewarding. Rog Shields scored our first touchdown of the season in the first half of the game, the first time Kappa Psi had been scored on in three years. The game ended in a 6-6 tie, ending a winning streak of three years accumulated by Kappa Psi. Our third game, with Tau Delt proved to be our first victory with Shields scoring the 6-0 winning touchdown on a muddy field. Our game with Bartlett the following week proved to be an 18-0 romp, with Ron Carmichael, Skip Conwicke and Doug Hughes scoring for the green and gold. Our fifth game with Kappa Nu ended in a hard fought 8-0 victory with Chuck Sonne scoring the only touchdown on a run, and with Skip Conwicke catching a pass for our only extra points of the season. At this point in the season we played Klan Alpine—our victory

(Continued on page three.)

## High Alpha's Letter

I want to talk about the state of Lambda Chi Alpha at Alfred University. In my last letter I talked of the promising future that lay before us and of the personnel that will be guiding Kappa Sigma Zeta in the next few years. I wish to hold that same stand. I indeed believe that with the co-operation of all, we can carry on everything that Lambda Chi Alpha has stood for in the past.

Homecoming Weekend brought our problem into the limelight. At this time we were informed of the university rule; "social functions may be held in public rooms only." This meant that "upstairs permissions" were not allowed on the big weekends. Well, we looked around for "Public rooms" and came up with parts of the first floor and the basement. The basement is just as you remember it (dirt floor, leaking walls, floods in the spring, etc.) and the first (as it is now) is far from adequate. With the enrollment of Alfred increasing each year, Lambda Chi is heading in the same direction. If our present facilities (public rooms) aren't able to accommodate our so-

(continued on page 2)

## Social Highlights

The Lambda Chi Alpha social season again turned out to be very successful in 1958, despite a few new and rather drastic University rulings pertaining to fraternity social life. To be more specific, the University has eliminated "upstairs permissions" and "Intermission parties" on the big weekends for all fraternities. The first rule is particularly detrimental to the social life of Lambda Chi, as we lack a basement party room and thus must confine all of our partying on these weekends to the first floor. It is crowded and inconvenient but we are getting used to it.

All the members of the house worked very hard to sponsor the weekend parties. The two very talented ceramic designers in the house, Frank Biele '61 and Bob Tite '61, greatly helped these parties to be successful with their elaborate decorations. Besides the usual beer blasts after the football and basketball games, we had a Bohemian Party, a Pajama Party, and a combination Halloween costume and Glug party.

I believe the house feels that the pajama Party was the best of all. To create the proper atmosphere as the guests arrived, we placed a bed on the front porch in which Barry Livermore read Playboy and slept. He was quite at home and everyone got a kick out of his antics and outfit. The dining room was the "Sleeping Porch" and with the lights turned down low and the other decorations all over the room, everybody felt right at home. Music was supplied by Jim Ellis and his Combo, and Al Richter and Bill Marchetti provided the entertainment.

Homecoming is the only big weekend we have had so far. Many of the alumni returned Friday night and found a cocktail party in full swing. Saturday afternoon

(Continued on Page 2)

LXA — KAPPA SIGMA ZETA

Alfred University

Alfred, New York

Editor

Charles Sonne '59

High Alpha's Letter

(Continued from Page 1)

cial functions this year, what are we to do in the coming years?

This problem is accompanied by many questions. How are we going to look during rushing, next to the fraternities with vast "public rooms?" What is the best plan of action in order to provide these "public rooms?" Should the basement be renovated? Should the first floor be enlarged? Should other quarters be secured?

We are carefully studying these questions and with the help of the local alumni and our new Hi-Pi, Major Walter Davis, we will come up with an answer. Whatever this answer is, we cannot make a move without your assistance and cooperation. Can we count on your help?

You'll be hearing from us soon.

Yours in ZAX,

Ron Theis, High Alpha

Social Highlights

(Continued from Page 1)

was the football game, after which a buffet dinner was held at the house, followed by a house party. Every class from 1950-on was represented this year. It really felt good to see that the alumni haven't forgotten us.

Before the semester ends, another Alphas party is planned. Also in the future is Interfraternity and tapping night for the freshmen, which will end the first semester social season.

There have been several pinnings: Roger Shields '59 to Pat Harding, Pi Nu '58; Don Sanders '60 to Andrea Klaess of Rockville Centre; Skip Conwicke '60 to Vera Jungling, Alfred State Tech '60; Ron Carmichael '60 to Lynette Chastek, Brockport State '60.

Alumni News

There was quite a turnout for Homecoming this year with 24 brothers back for the weekend. Here are the ones that come to mind after weeks of trying to remember:

George Crozier '56, Dick Grassi '56, Bob Baldino '56, Jim Laskie '56, Don Overbye '56, Gary Braun '57, Ed Spirko '57, Ron Fausak '57, Carl Peterson '53, Fran Peterson '57 and Wayne Decker '56.

Ard Davis '57, Stan Harris '58, Bruce Boulton '58, Bob Everson '57, Dick Valentine '56, Dean Elliott '56, Dick Tomer '56, Lyle Thornton '60, Dick Thornton '56, Stan Waugh '53 and Roger Eliss '58.

Marriages:

Bruce Boulton and Ann Hopkins, Sigma '57.

Bob Jackson '57 and Marilyn Fox, Omicron '58.

Bill Clark '57 and Ann Wallace, ABX '57.

Dave Wilcox '58 and Tinker Forbes, Sigma '57.

Stan Harris '58 and Camille Crofoot, Theta '58.

Andy Seaman '58 and Lillian Sanford, Salisbury Mills, N. Y.

Baxter Pience '58 and Barbara Bezdik, Sigma '60.

ROTC Graduates:

Fran Tatnall and Joe Stein are stationed at Fort Sill, Okla., where they have quite the life as the rumor goes. Joe stopped by at the house en route to the base.

Bill Dick is stationed at Fort Dix now. Bill had quite a vacation the week of Nov. 8, stopping at the house for a short while before going home.

Andy Seaman is stationed at Fort Benning, Ga. where he is undergoing Airborne-Ranger training.

Professional Students:

Stan Harris is studying at Western Reserve in Ohio.

Bax Pierce is also in medical school at Temple.

Dave Wilcox is working for his Masters at the University of Illinois.

Phil Baker just can't leave Alfred. He's doing his graduate work here at the University.

George Norton, his wife and two

daughters are living in Rochester, where George is employed by the Pfaunder Co. as a Research Ceramic Engineer.

Dr. Paul Bruce Pettit lives in Delmar, New York, where he and his wife and two children live. He is an Associate Professor of English (Theatre) at the Albany State Teachers College and plans to write more articles, and produce more plays and children.

ALUMNI — If you want your name and whereabouts in this column, send me a postcard with some information about you and your family. Let's not lose contact, alums!

Ed Perkins, his wife and two children are living in Olean, where Ed is employed as Plant Manager of the Olean Tile Co.

Fred Kalber Jr. recently moved from Texas to Cedar Ave., Lewes Beach, Delaware.

Guiding Lights

The newly elected officers for the next two semesters are:

President—Ronald Theis '60, Kenmore, New York.

Vice-President — Robert Tite '61, Spencerport, New York.

Secretary — Jack L'Amoreaux '61, Elmina, New York.

Treasurer — William McDonough '60, Buffalo, New York.

House Manager—Frank Biele '61, Yonkers, New York.

Rushing Chairman — Douglas Hughes '61, Larchmont, New York.

Boarding Club Manager—Richard Ottman '61, Howe Cave, New York.

Social Chairman — Albert Richter '60, Forestville, New York.

Ritualist — Richard Moore '61, Nichols, New York.

Assistant House Manager—Bruce Kelly '61, Cohoes, New York.

Kappa Sigma Editor—Robert Gabbey '61, Rochester, New York.

Cross and Crescent Reporter—Laurence Cagle '61, Perry, New York.

Assistant Treasurer — Thomas Wonnacott '61, Buffalo, New York.

Historian — Ryan Washburn '61, Saranac Lake, New York.

(Continued on page 3)

## New House Improvements

The fall semester brought many new improvements to the physical appearance of the house. New gutters were installed, and the brothers gave the exterior of the house a bright new coat of paint. An aluminum awning and commercial type storm door were purchased and installed at the kitchen door entrance. This awning is large enough to act as a shield for the doorway and the aluminum combination stormdoor keeps out the weather and is a replacement for the old wooden screen door.

The hot water pipes in the new addition were insulated to economize on the heating bill and to provide more heat for the addition. A committee was again set up to look into the possibility of utilizing the cellar as a public room as the university administration had curbed all upstairs permissions except for buffet dinners. The possibility and feasibility of a new addition is also being considered, for as we all know, the cellar walls are formed by flagstone and not of cinder blocks or poured concrete. The conditions imposed by the flagstone walls and the spring immediately behind the house cause the cellar to be damp and cause the formation of pools of water on the dirt floor. A sump pump may be placed in the cellar in a strategic position to record the results. If the results are favorable, the cellar may be converted into a public room. The general assumption is that the house will have more extensive facilities for social functions in the near future.

## Brothers in the Bond

On the weekend of November 8, four new men were initiated. They are:

Lawrence T. Cagle, Perry, New York '61; George F. Glaess, Rochester, New York '60; Albert L. Richter, Forestville, New York '60 and Joseph E. Vollers Jr., Yorktown Heights, New York '60.

## Outstanding Pledge Class

After completing a nine-week rushing program under the leadership of Sam Iorio '59, 45 men chose Lambda Chi Alpha on Preferential Thursday evening before the Christmas recess. Of these 45, 23 were pledged the following evening.

We all deeply regret and feel the loss of one of our pledges, Fred Burmester, from Troy, N. Y., a sophomore transfer student from Wake Forest, who lost his life in an automobile accident during the Christmas holidays.

Our newly tapped pledges are:  
 Peter Baron '62, Liberal Arts, Scarsdale, New York.  
 Lawrence Bird '62, Ceramic Engineering, Binghamton, New York.  
 Robert Campbell, '62, Ceramic Engineering, Voorheesville, New York.  
 Stephen Crossman '62, Liberal Arts, Fayetteville, New York.  
 William Dusett '62, Economics, Fairport, New York.  
 Alexander Griffith '62, Ceramic Engineering, Scotia, New York.  
 John Gutierrez '62, Liberal Arts, Painted Post, New York.  
 Richard Henion '62, Liberal Arts, Brockport, New York.  
 Paul Herold '62, Ceramic Engineering, Hamburg, New York.  
 Philip Hickock '62, Ceramic Engineering, Ogdensburg, New York.  
 William Keen '62, Liberal Arts, Port Washington, New York.  
 Edmond Kotary '62, Ceramic Engineering, Varona, New York.  
 David Martin '62, Ceramic Engineering, Bridgeville, Pa.  
 Joseph Nemeth '62, Ceramic Engineering, Chemung, New York.  
 Elwyn Reed '62, Ceramic Engineering, Adams Center, New York.  
 Walter Reed '62, Ceramic Engineering, Friendship, New York.  
 Charles Ries '62, Liberal Arts, Buffalo, New York.  
 Michael Same '62, Ceramic Engineering, Seneca Falls, New York.  
 Sandy Tedesco '62, Ceramic Engineering, Silver Creek, New York.  
 Paul Trivelpiece '62, Liberal Arts, Manlius, New York.  
 John Weber '62, Ceramic Engineering, Watkins Glen, New York.

Nathan Whitaker '62, Ceramic Engineering, Lindley, New York.  
 David Schuler, Class of '60, a History and Political Science Major from Lockport, New York was pledged earlier in the semester.  
 George Besch, a sophomore Geology major transfer student from The Colorado School of Mines, from Lancaster, N. Y. is a social affiliate.

## Pusher Department

The Quiet Hours Program, now in effect for the third semester, has proven that it is here to stay. The brothers have been highly cooperative in enforcing this program from seven until eleven p.m. Our "gig" system has proved to be the greatest deterrent to the noise making faction of the house, for no one cares to wash and dry the dishes for the weekend pick up meals.

The university finally rallied and computed the indexes for last semester. Here is how we stand — university all men's average is 1.30, pledges' average is 1.28, and our over all fraternity average is 1.43, well over the all mens' average. Another accomplishment of the 39 brothers must not be overlooked. They have all maintained their accumulative index required for graduation.

## Growl—Tigers

(Continued from page 1)

would have meant a tie for first place with Kappa Psi in the league standings, but unfortunately we lost 12-0 in what proved to be a very heated and widely-discussed contest.

Our prospects for the basketball season look extremely promising, with all the five starters from last year's team returning for another season. This fall, football and basketball jerseys were bought, giving our players and teams more prestige as well as increased athletic spirit.

## Guiding Lights

(Continued from Page Two)

Assistant Social Chairman — John Bell '60, Rochester, New York.  
 Sports Chairman — Frank Finnerty '60, Buffalo, New York.